



chair component catalogue



YOUNG

YOUNG CORPORATION
WORLD WIDE

ASIA REGIONS

Young Indonesia Pratama PT.

Jl.Arteri Kelapa Dua Kav.12B Blok B3-B4
Kebon Jeruk-Jakarta Barat 11540
Telp:021-53653600
Fax: 021-53653700

Young Industry Indonesia PT.

Komplek Industri Menara Permai Kavling 10A
Jalan Raya Narogong Km.23
Cileungsi-Bogor 16820, Indonesia
Tel.(62-21)82497373, 82480029; Fax.(62-21)82496736/60

Young Hangzhou Mechanism Co.Ltd.

No.88 Mingxing Road, Minfeng Industrial Zone
Yiqiao Town-Xiaoshan, Hangzhou-Zhejiang Prov. P.R.China
Tel.(86-571)65978/988;Fax.(86-571) 22865998

Young Corporation Group

No.18 Kunzhou Industrial Bijiang Village Beijiao Town Shunde District
Foshan City, Guangdong Province, PRC
Tel.0757-22394727 Fax.0757-22394707

EUROPE REGIONS

Young Component's UK LTD

Unit 16-20 Williams Way
Wollaston Industrial Estate-Wollaston
Northampton NN29 7 RQ
United Kingdom
Tel.+44 1933667447 Fax. +44 1933 666327

AMERICA REGIONS

Young Corporation of America

605 S Miliken Ave#F
Ontario, CA 91761
Tel.(323)7215200
Fax.(323)7215200

Young Component's Canada (LTD)

88 Konrad Crescent#2
Markham, ON L3R 8T7
Canada
Tel (905)4778842 Fax: (905) 4778843

Young Industrial Mexico S.A DE C.V.

Morelos#106 Tlalpan, Mexico D.F.c.p.14080
Mexico city
Tel.(52)(55)31844789
Nextel radio code 62*15*7164

AFRICA REGIONS

Young South Africa CC.

83 Capital Hill Commercial Estate, cnr le Roux & Morkels Close, Midrand
Tel.+27 11 2077600/312 2292 Fax.+27 118050852/3151848

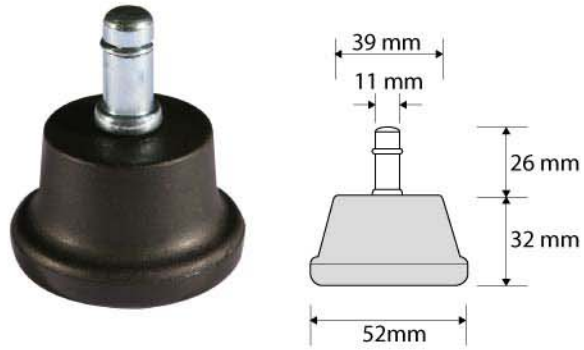


your reliable chair specialist

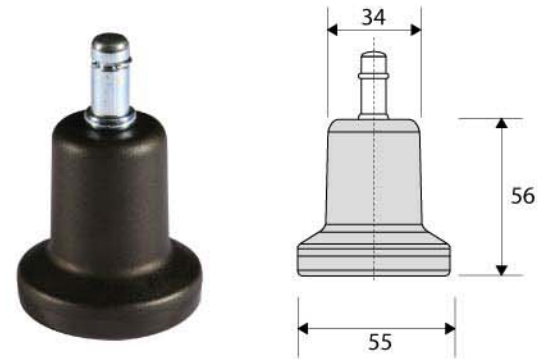
www.youngcorporation.com

■ GLIDES

YC 4080



YC 4095

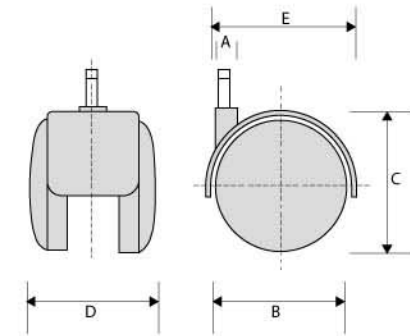


■ NYLON CASTOR

YC 5001



YC 5003
(Threat 3/16 x 13)



Type	A	B	C	D	E
YC 5001	11	50	54	45	62
YC 5003	11	50	54	45	62

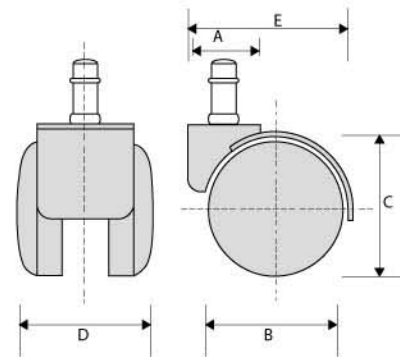
unit : mm

Color : Bronze, Chrome, Light Grey

YC 6381 (Hood 38 mm)
YC 6421 (Hood 42 mm)
YC 6461 (Hood 46 mm)



YC 7461 (∅ 55 mm)



Type	A	B	C	D	E
YC 6381	38	50	54	55	68
YC 6421	42	50	54	55	70
YC 6461	46	50	54	55	74
YC 7461	45	55	58	54	72

unit : mm

■ PU CASTOR

YC 6001PU



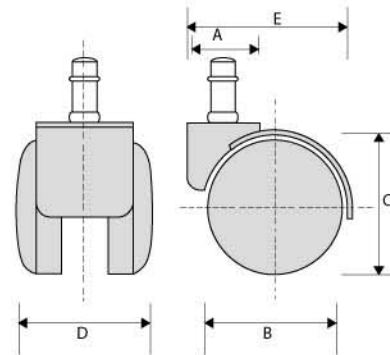
YC 6131PU



YC 6141PU



YC 6500 (∅ 65mm)



■ BREAKING CASTOR

YC 6060



YC 6060 PU



Type	A	B	C	D	E
YC 6060	37	50	55	52	67
YC 6060 PU	37	50	55	52	67

unit : mm

■ ESD CASTOR

YC 8501



YC 8511 (With Break)



YC 8521 PU (With PU Wheel)



Type	A	B	C	D	E
YC 8501	40	50	55	55	70
YC 8511	40	50	55	55	70
YC 8521 PU	40	50	55	55	70

unit : mm

■ NYLON FOOTBASE

YB 1027(21")
YB 1030(23")
YB 1032(25")
YB 1035(27")



YB 1130(23")
YB 1132(25")
YB 1135(27")



YB 2532(25")



■ METAL BASE
for wooden cap

YB 7025(25")



YB 7133



YB 7132



■ ALUMINIUM FOOTBASE

YB 6030(24")
YB 6032(25")
YB 6035(27")



YB 6132(25")flat



YB 6235(27") w/o Plastic Cap
YB 6235(27") with Plastic Cap



YB 6432(25")



YB 6535(27.7")high arch



YB 6633(25")



■ FOOTRING

YB 9300(18")
Round Tube Ring



YB 9350(18")
Round Tube Ring



YB 9375 Turn Lock(18")



YB 9400(20")
Round Tube Ring



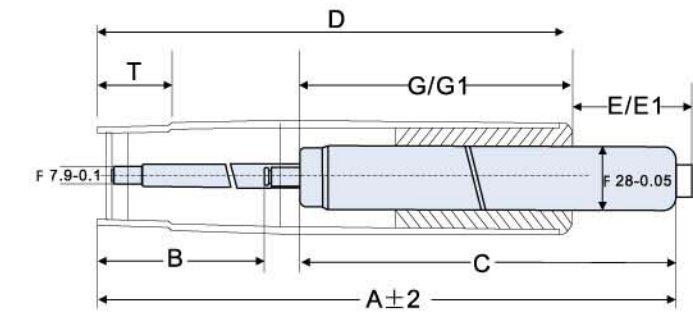
YB 9410(20")
Oval Tube Ring



YB 9800(20")
Round Tube Ring

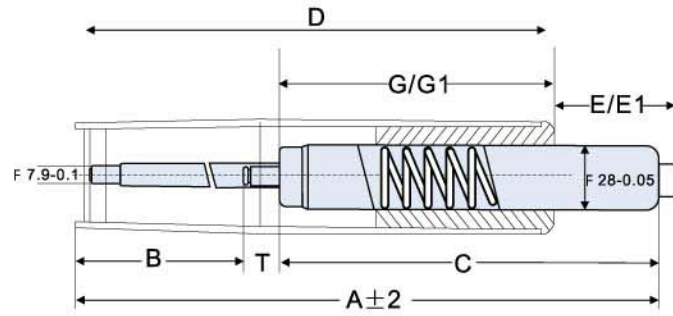


■ GAS CYLINDER



	Code	YG 3183	YG 3214	YG 3215	YG 3235	YG 3295	YG 3385
A	Extended length(mm)	305	347	382	414	535	705
B	Stroke length(mm)	80(3")	100(4")	120(4.5")	140(5.5")	200(8")	270(10.5")
C	Body length(mm)	210	232	247	259	320	420
D	Column length(mm)	180	210	210	230	290	380
E	Min. length outside the column(mm)	45	37	52	44	45	55
E1	Max length outside the column(mm)	125	137	172	184	245	325
F	Pressure(Newton)	400N	350N	300N	300N	300N	300N
G	Min length inside the column(mm)	165	185	195	215	275	365
G1	Max. length inside the column(mm)	85	85	75	75	75	95
T	Taper(between the bottom of bases)(mm)	30/70	30/70	30	30	30	30

■ AUTO RETURN GAS LIFT



YG-3120 ARH YG-3295 ARH YG-3385 ARH



	Code	YG-120ARH	YG-3295ARH	YG3385ARH
A	Extended length(mm)	390	560	700
B	Stroke length(mm)	112	193	265
C	Body length(mm)	213	283	385
D	Column length(mm)	330	480	650
E	Min. length outside the column(mm)	30	50	20
E1	Max length outside the column(mm)	60	80	50
F	Pressure(Newton)	420 N	420 N	420 N
G	Min length inside the column(mm)	100	90	120
G1	Max. length inside the column(mm)	213	283	385
T	Taper(between the bottom of bases)(mm)	30	30	30

■ COVER CAN

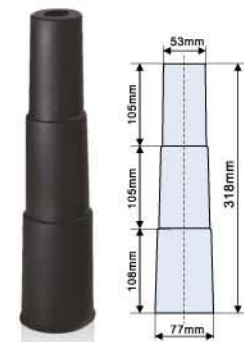
YE-6302(60M/M)



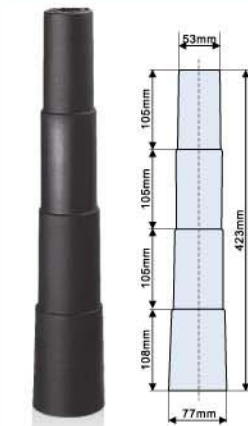
YE-6303(75M/M)



YE-6503



YE-6506



■ ADJUSTABLE ARMREST

YA 3115



YA 3165



YA 3175



YA 3195



YA 3225



YA 3233



YA 3245



YA 3415



YA 3525



YA 3625



YA 3665



YA 3715



YA 3675



YA 3685



■ ADJUSTABLE ARM BRACKET

YE 4194 (Knob)



YA 4160



YA 4140



YA 5100



■ PU ARM PAD

YA 1100 	YA 1200 	YA 1210 	YA 1220L/R 
YA 1682 	YA 1710 	YA 1818 	YA 1819 
YA 1827 	YA 1830 	YA 1850 	YA 1889 
YA 1898 	YA 1803 	YA 1821 	YA 1826 

■ GEL PAD

YA 1701 GEL 	YA 1751 GEL 	YA 1788 GEL 	YA 1739 GEL 
--	--	---	--

■ PU ARM REST

YA 1001 	YA 1007 	YA 1008 	YA 1014 
YA 1083 	YA 1021 	YA 1037 	YA 1016 
YA 1203 	YA 6100 	YA 6115 	YA 6125 
YA 6135 	YA 1089 	YA 1674 	YA 1038 

■ PP ARM REST

YA 2202



YA 2203



YA 2204



YA 2205



YA 2206



YA 2275



YA 2307



YA 2502



YA 2206



■ ARM BRACKET

YA 4010
75° degree
96° degree
110° degree



YA 4019



YA 4101



YA 4200



■ LUMBAR SUPPORT

YS 6010
4 Way



YS 6020
4 Way



YS 6050
2 Way



■ KEYBOARD MECHANISM

YK 4200



YK 1008



YK 4250

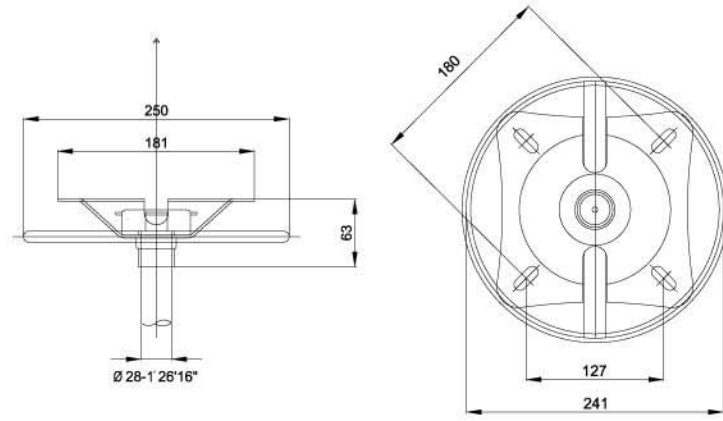


YK 1007

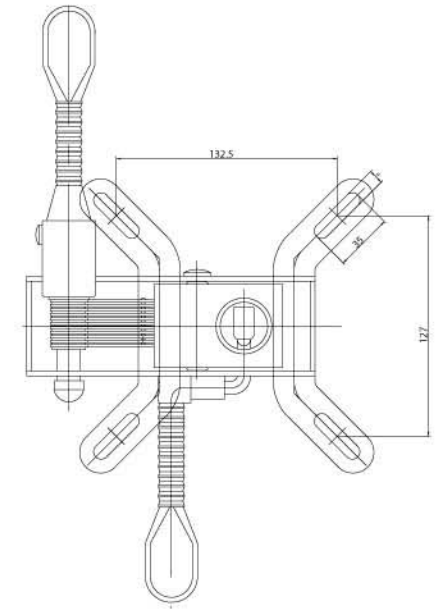


MECHANISM

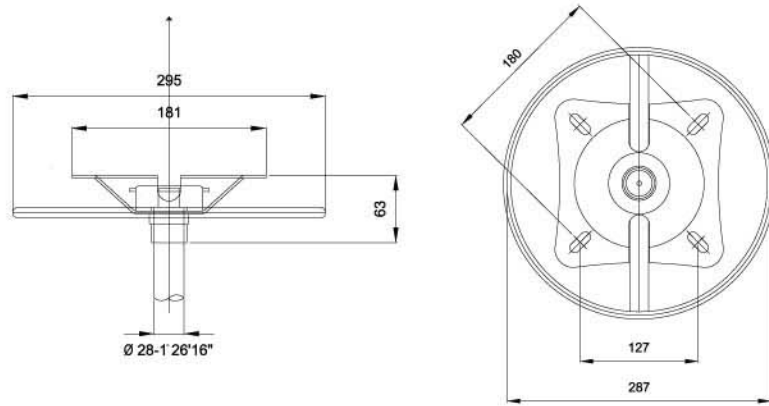
YM 1215



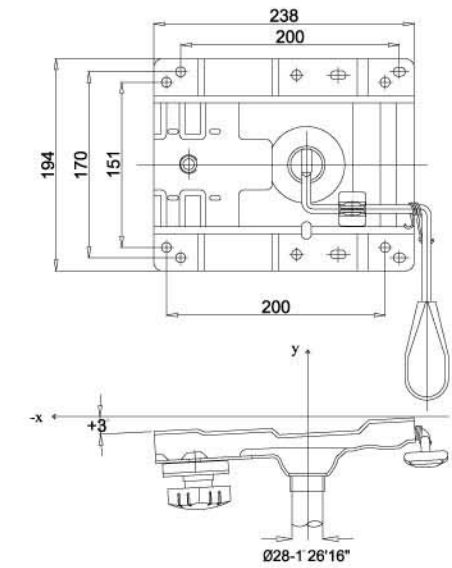
YM 1315



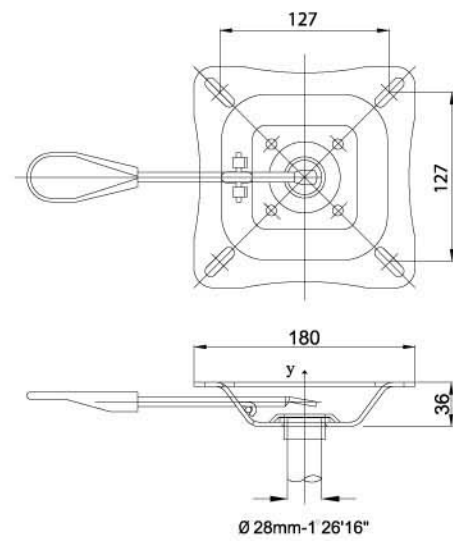
YM 1230



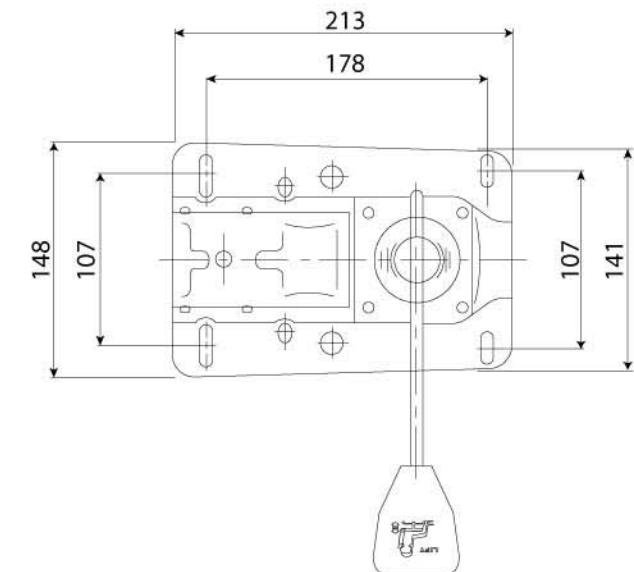
YM 1868



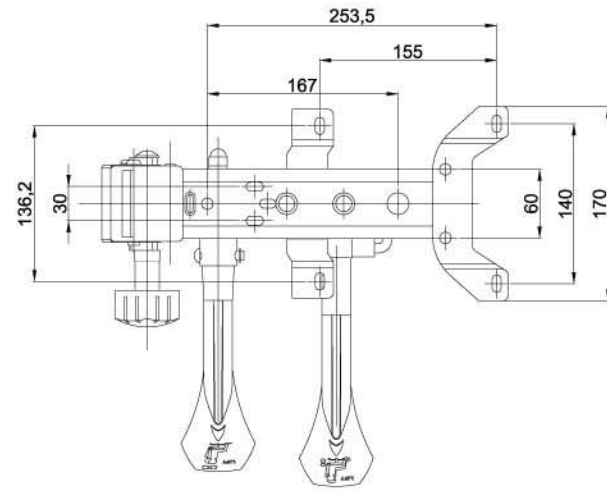
YM 1240



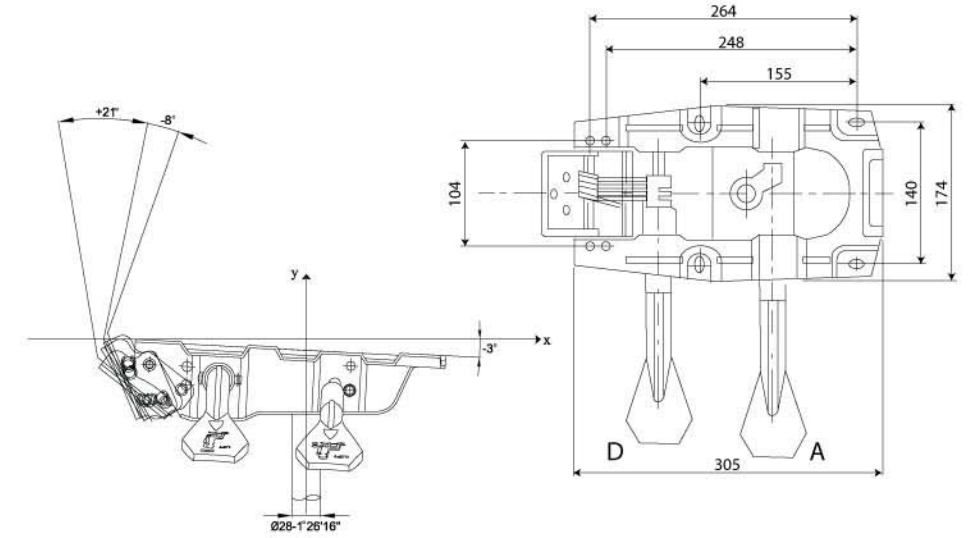
YM 1880



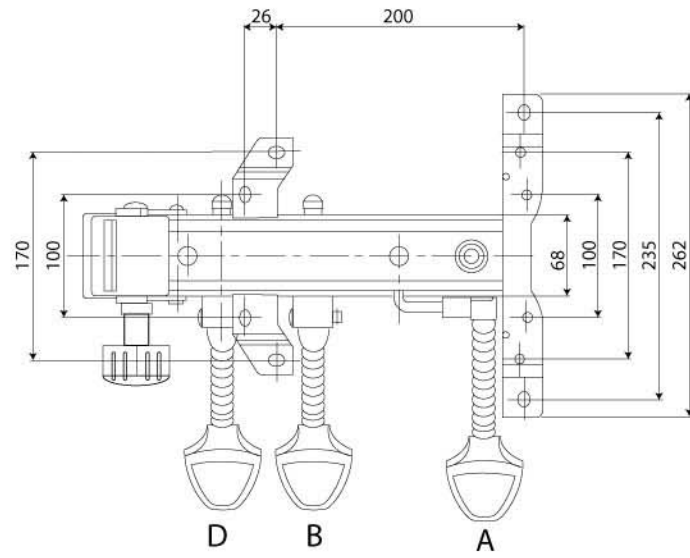
YM 2551
YM 2553 (3 Pedals)



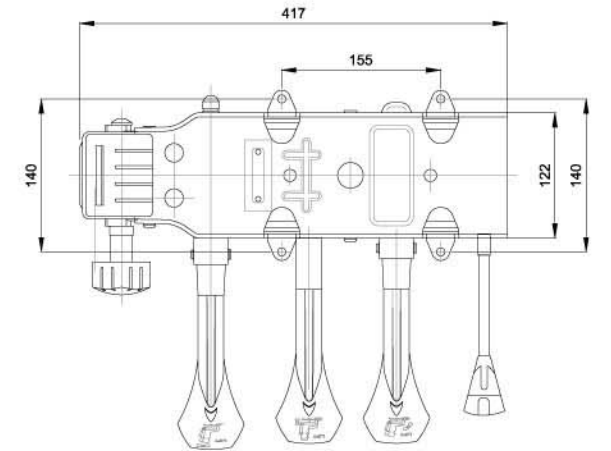
YM 6601
YM 6603 (3 Pedals)



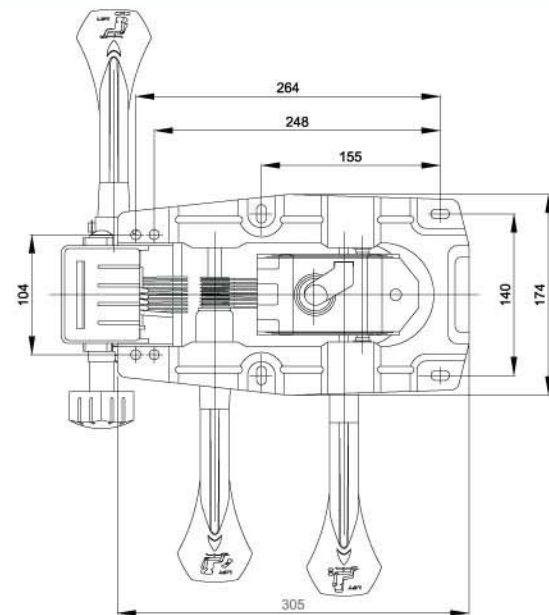
YM 4551
YM 4553 (3 Pedals)



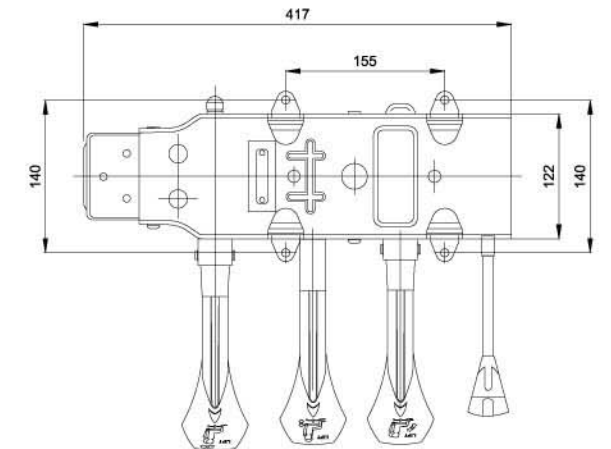
YM 7504



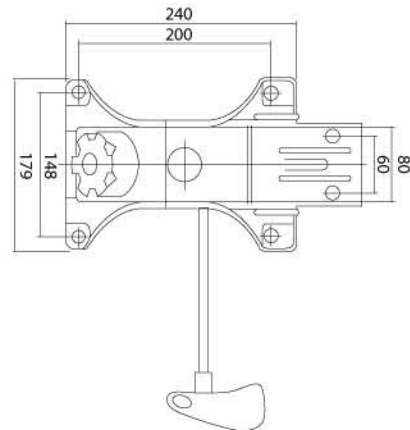
YM 6501
YM 6503 (3 Pedals)



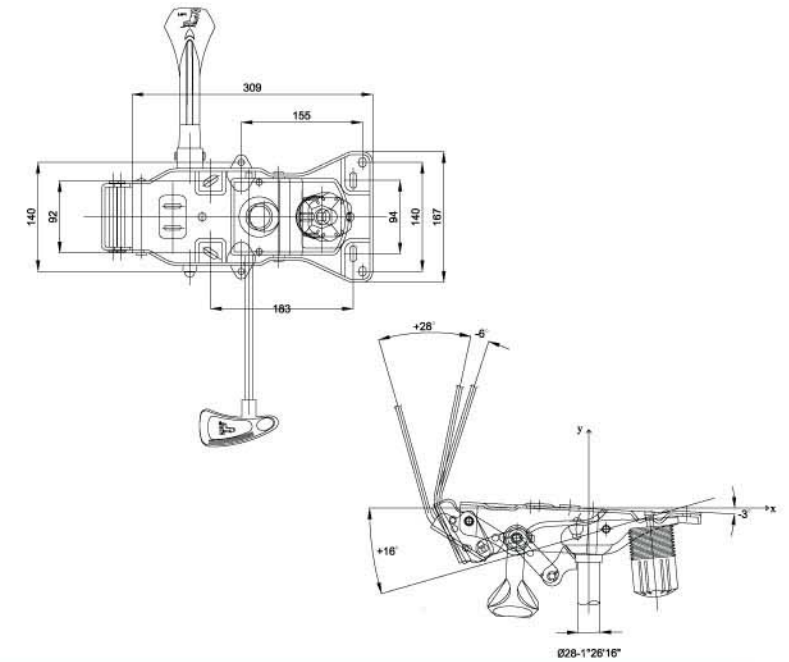
YM 7604



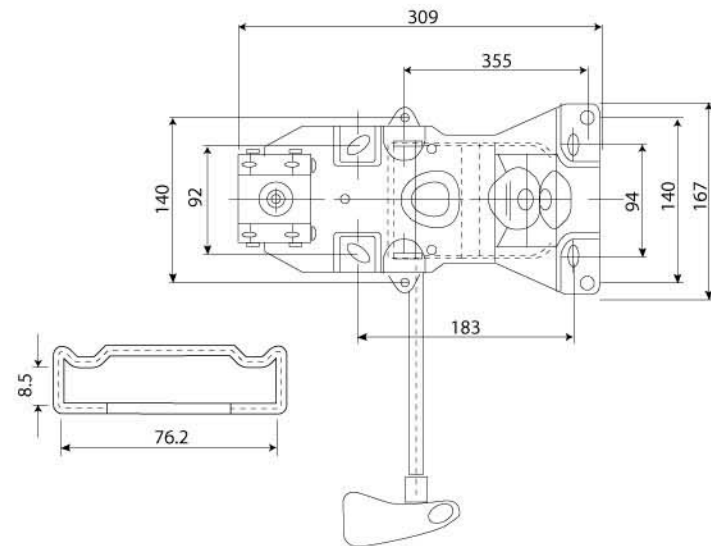
YM 8340



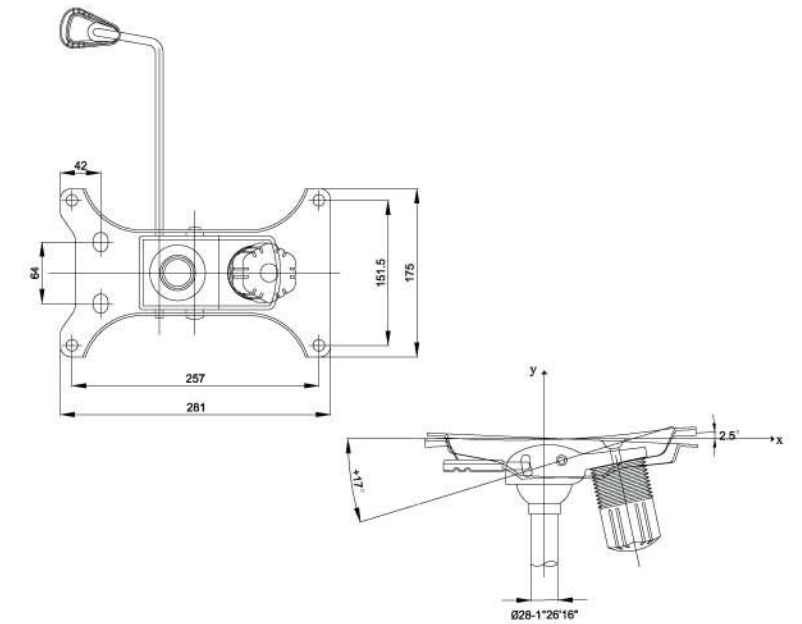
YM 8620
YM 8630 (3 Pedals)



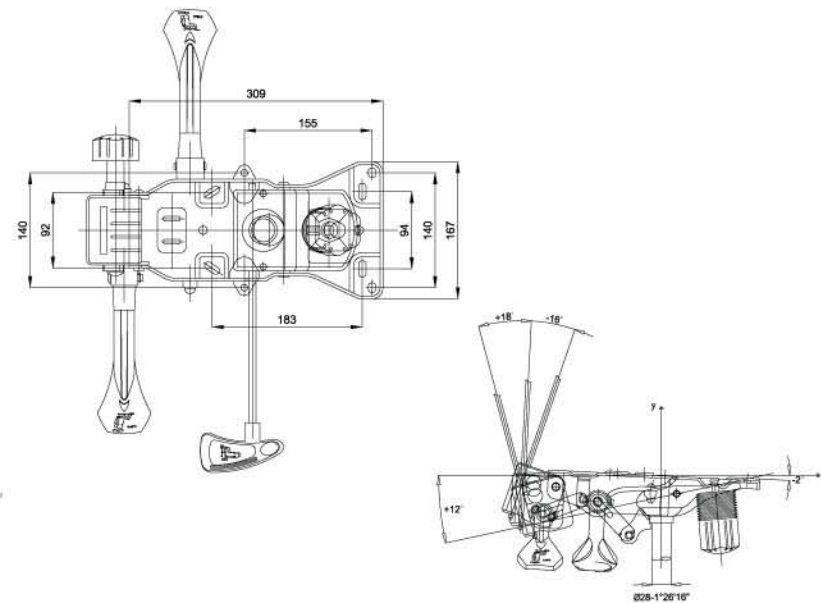
YM 8510 (For 2 1/2" Back Bar)
YM 8513 (For 3" Back Bar)



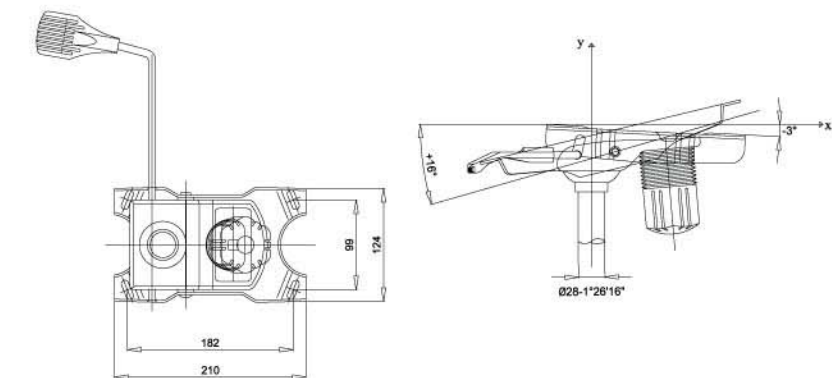
YM 8740



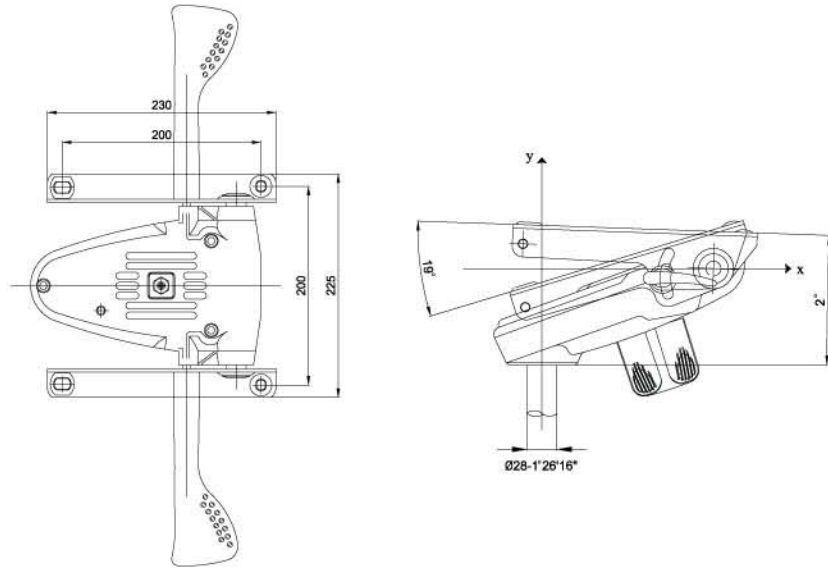
YM 8520
YM8530 (3 Pedals)



YM 8980

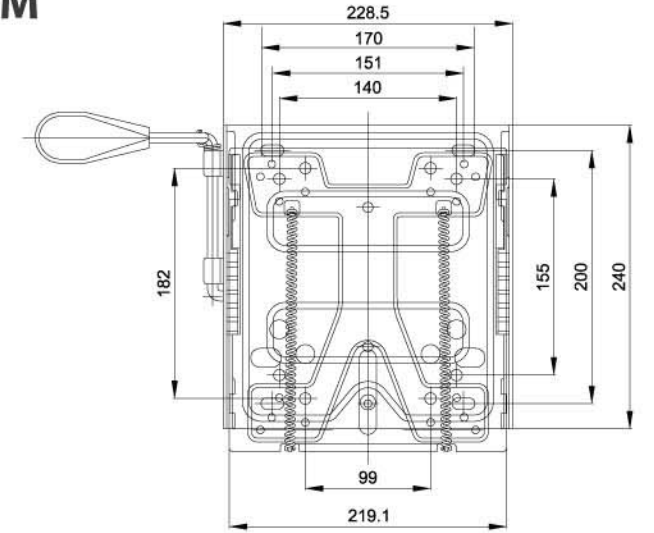


YM 9310

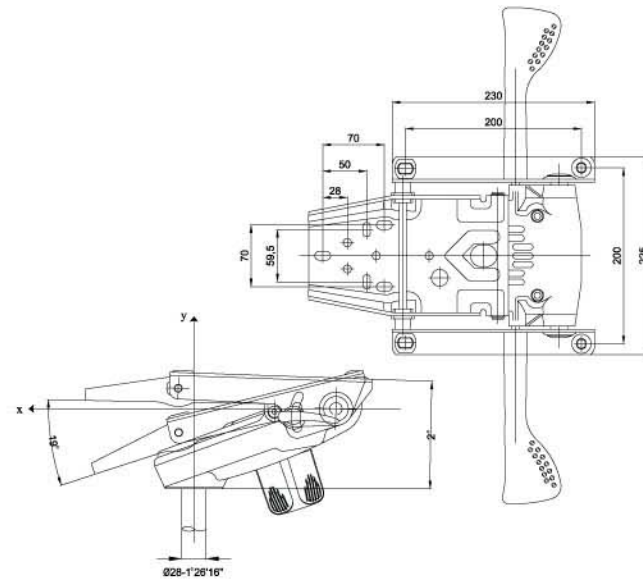


SEAT SLIDER MECHANISM

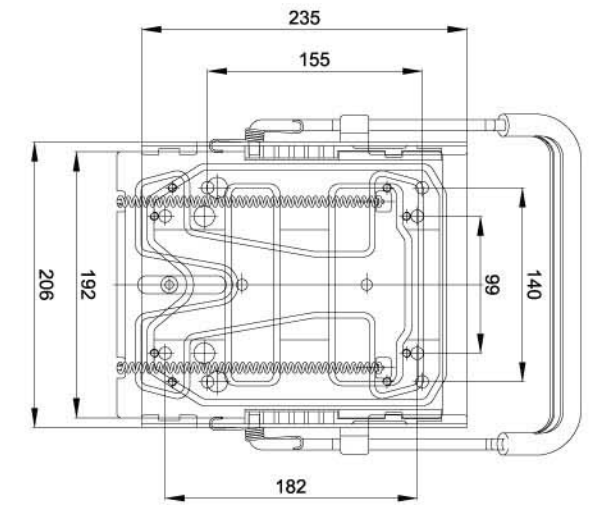
YM 4000



YM 9350

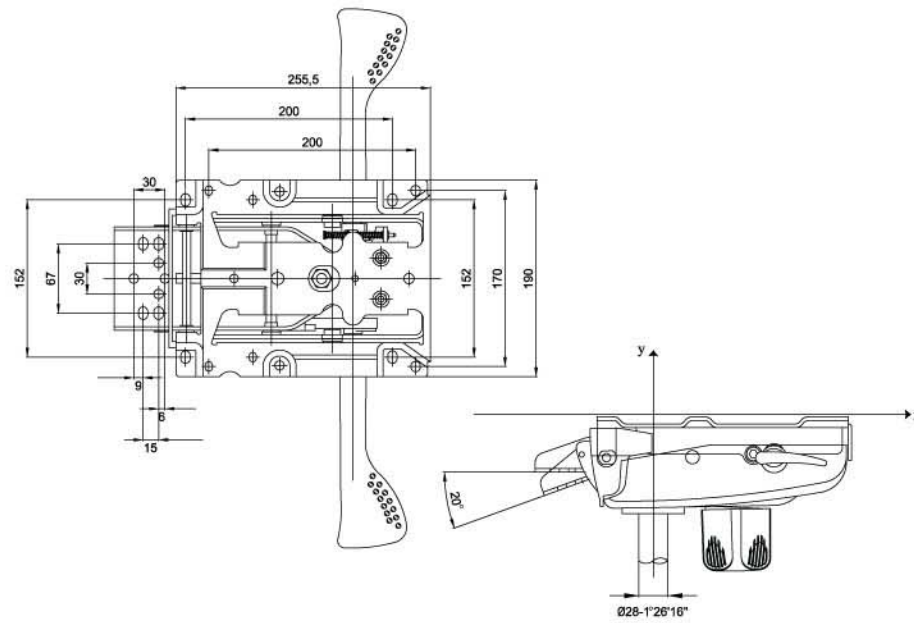


YM 7000

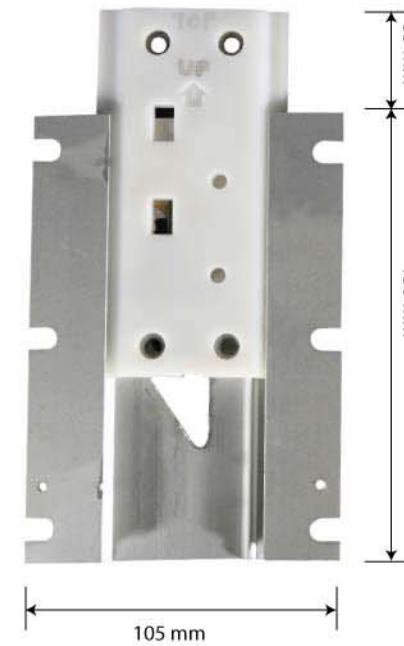


ADJUSTABLE UP-RIGHT

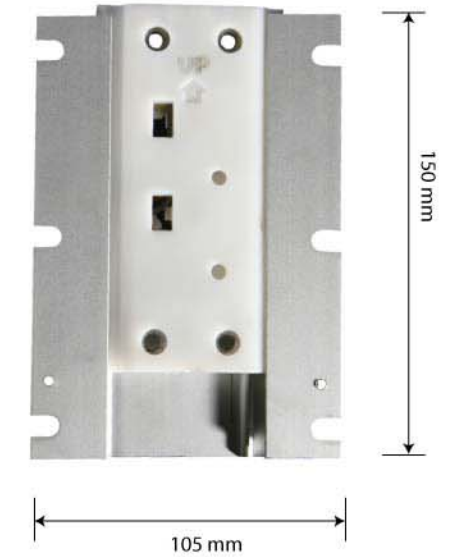
YM 9400



YU 1001

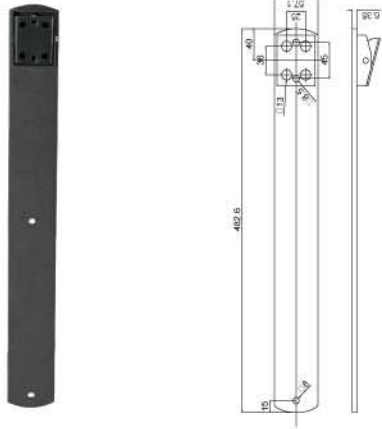


YU 1002

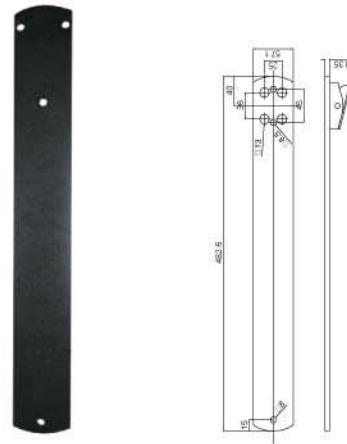


BACK UP RIGHT

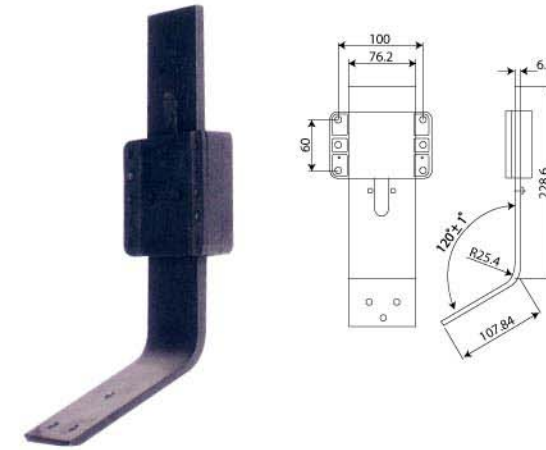
YU 4219



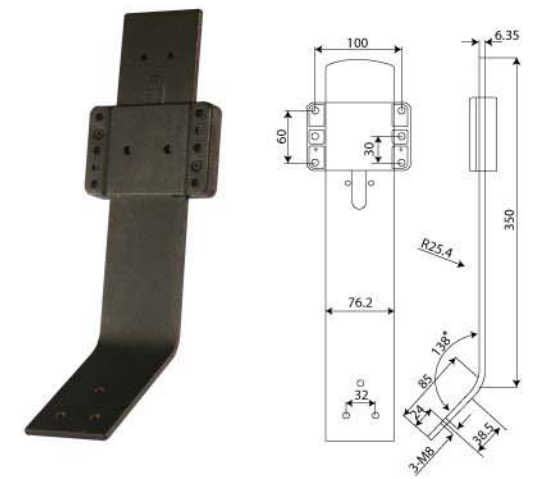
YU 4220



YU 6610



YU 6613



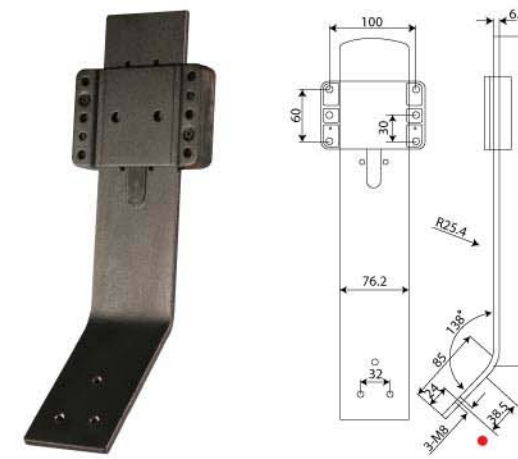
YU 4225



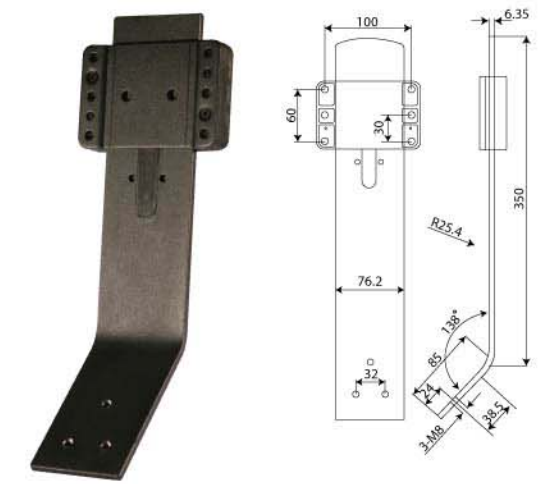
YU 4065



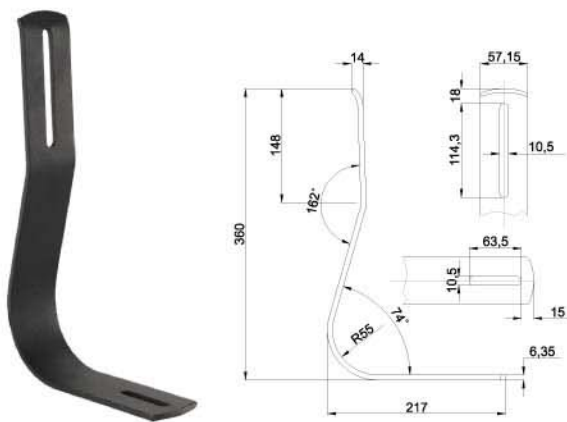
YU 6620



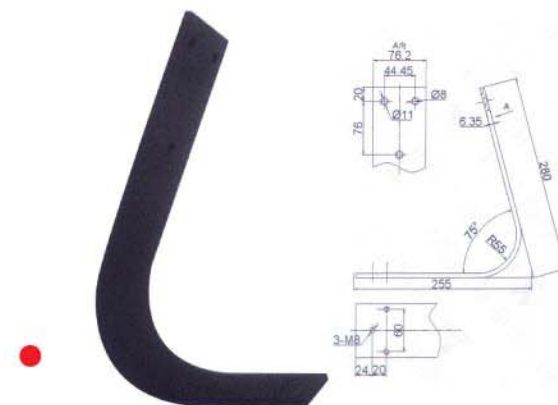
YU 6124



YU 4068



YU 6608

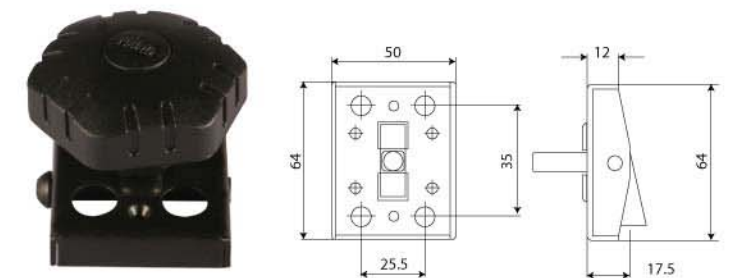


HINGS BRACKET

YU 3650



YU 3625



PLASTIC BACK

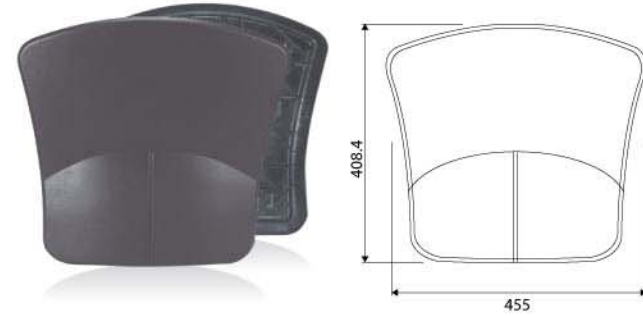
Orchid Medium

Outer YS-3001
Inner YS-3100



Bougenville Medium

Outer YS-3021
inner YS-3400



Orchid High

Outer YS-4001
Inner High YS-4100



Bougenville High

Outer YS-4021
inner YS-4400



Orchid Extra High

Outer YS-5001
Inner YS-5100



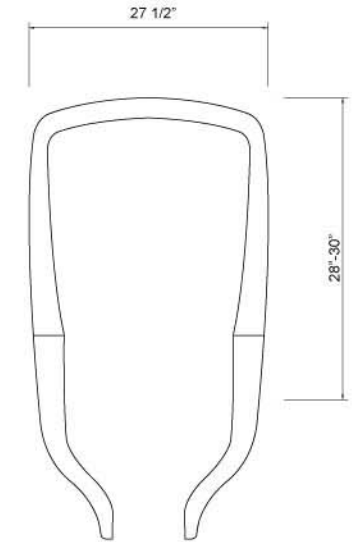
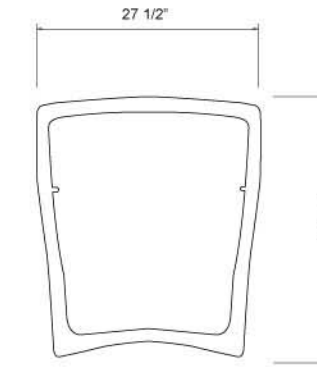
Tira

Outer YS-3073
Inner YS-3173



MESH CHAIR KIT

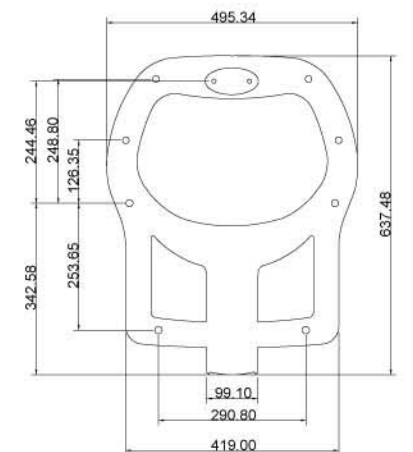
Saturn
YS 9207 & Headrest YS 1103



Pluto
YS 1905 Back & Headrest YS 1104



Adjustable Headrest



Mars
YS 1900



CHAIR KIT

YT 7170 Chair Kit



- YT 7170 = Frame 3/4 tube
- YP 6450 = Back plywood
- YP 2410 = Seat plywood
- YA 1014 = PU armrest

YT 7380 N Chair Kit



- YT 7380 N = Frame, 1/5" tube
- YP 6452 = Back plywood
- YP 2410 = Seat plywood
- YA 1083 = PU armrest
- YC 6381 = Castor

YT 7190 Chair Kit



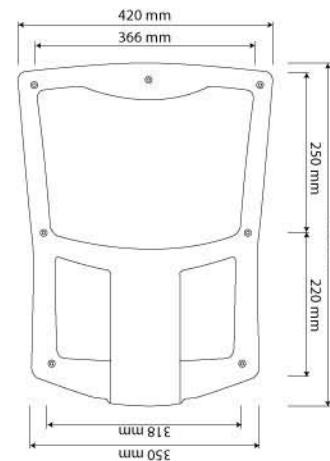
- YT 7190 = Frame, 3/4" tube
- YP 6450 = Back plywood
- YP 2410 = Seat plywood
- YA 1014 = PU armrest

YT 7384 N Chair Kit / with glides and armrest



- YT 7384 N = Frame, 1/5" tube
- YP 6452 = Back plywood
- YP 2410 = Seat plywood
- YA 1083 = PU armrest
- YC 4080 = Glides

Mercurius
YS 1908



YT 7500 Crown Kit



- YP 7386 = Back Plywood
- YA 1674 = PU Armrest
- YP 6017 = Seat Plywood
- YT 7386 = Metal Frame dia. 38mm
- YS 6012 = Plastic Seat Cover
- YC 3800 = Glide

YT 7385 N Chair Kit
w/o Arm



- YT 7385 = Frame, 1/5" tube
- YS 2012 = Back Outer
- YS 2112 = Back Inner
- YS 6012 = Lexture Seat Outer
- YS 6112 = Lexture Seat Inner

YT 7250 Chair Kit



- YT 7250 = Lexture Frame
- YS 2050 = Lexture Back Outer
- YS 2250 = Lexture Back Inner
- YS 6012 = Lexture Seat Outer
- YS 6112 = Lexture Seat Inner

Activ



- Activ Frame
- YS 2010 = Back
- YS 2110 = Padding Back
- YS 6010 = Seat
- YS 6110 = Padding Seat

Vixion



- YT 6110 = Vixion Frame
- YS 9901 = Seat

ISO chair kit(YT-7281)



- ISO Frame
- YS 2011 = ISO Back Outer
- YS 2211 = ISO Back Inner
- YS 6011 = ISO Seat Outer
- YS 6111 = ISO Seat Inner

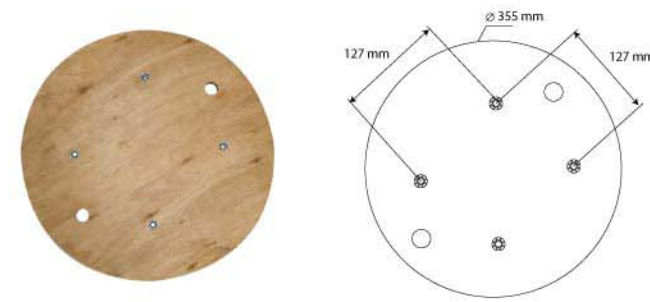
Axion



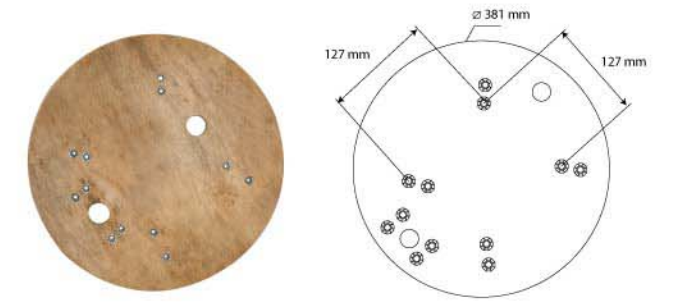
- Axion Frame
- YS 9902 = Seat
- YS 9903 = Back

■ PLYWOOD

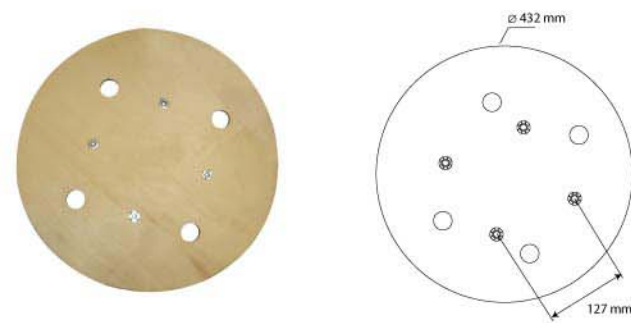
YP-1014



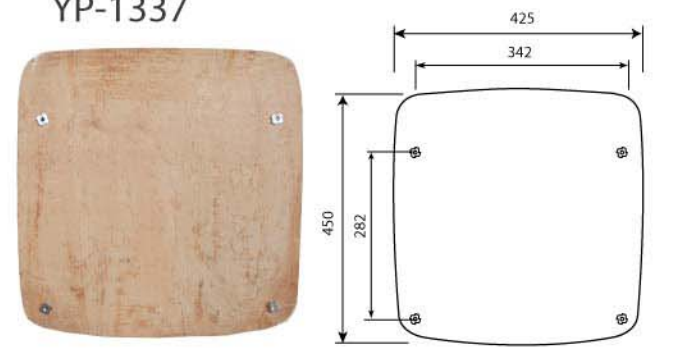
YP-1015



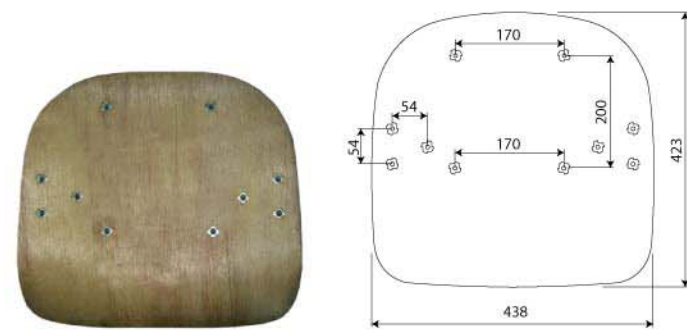
YP-1017



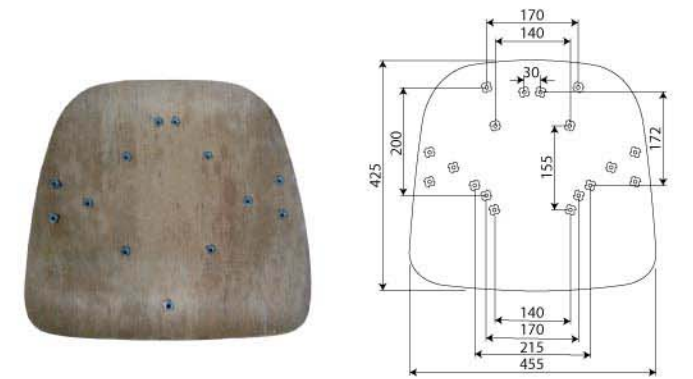
YP-1337



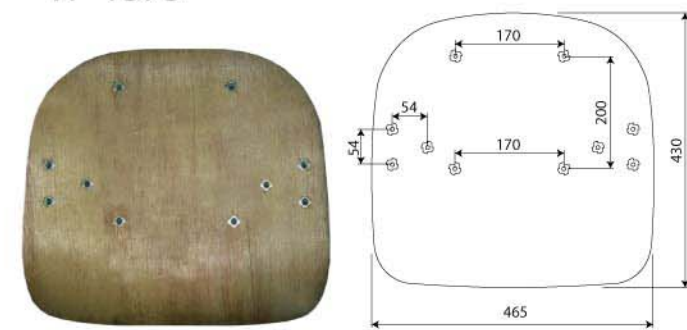
YP-1363



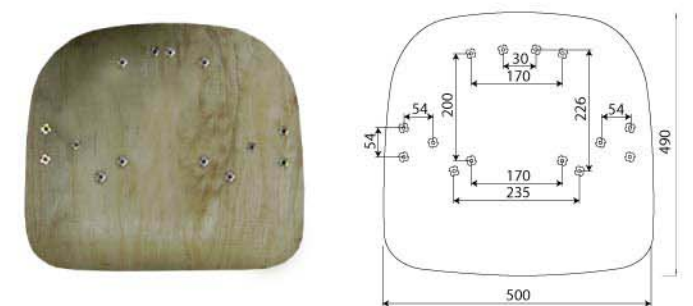
YP-1371



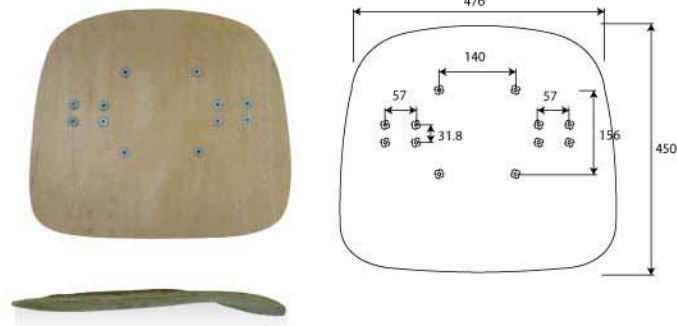
YP-1373



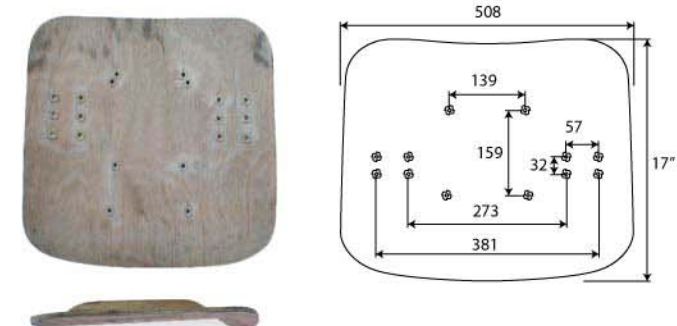
YP-1383



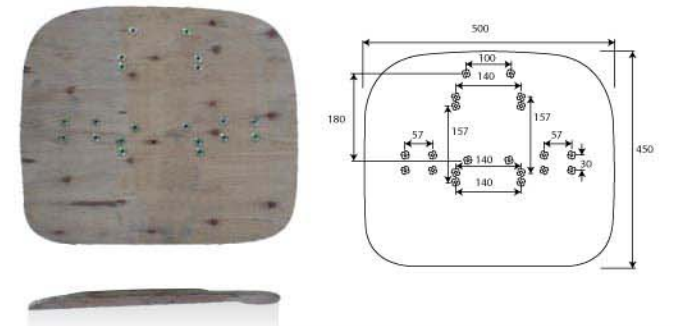
YP-1384



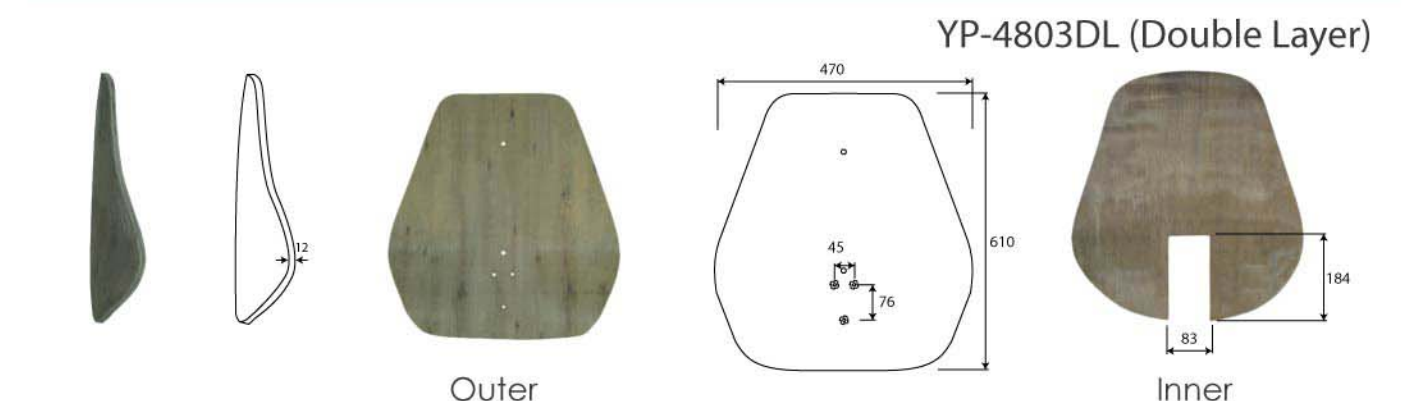
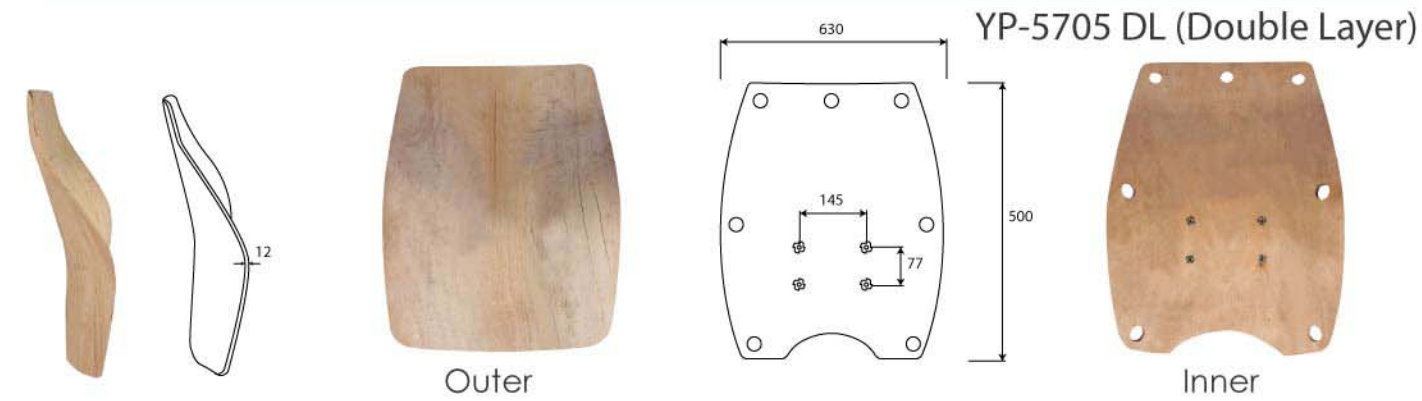
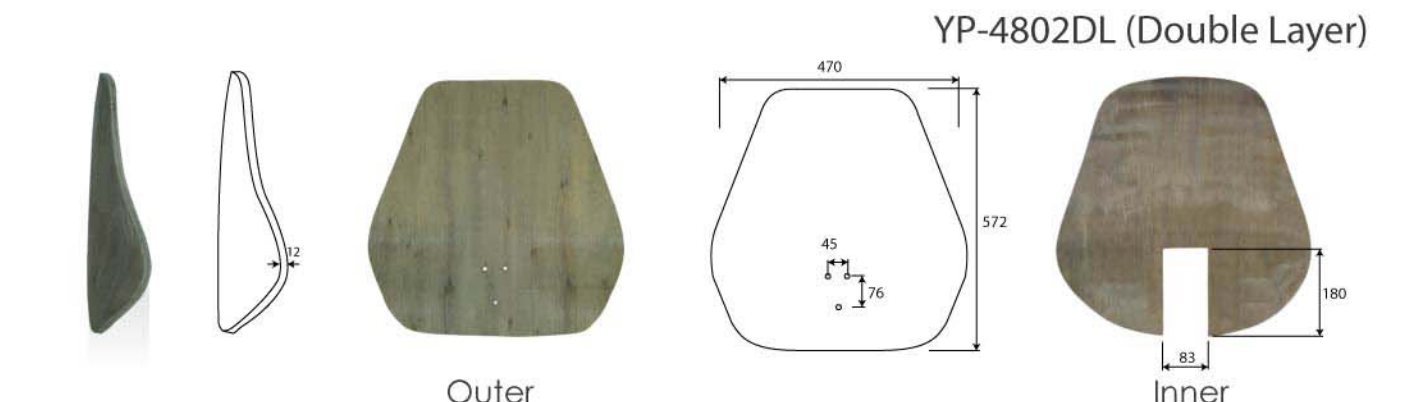
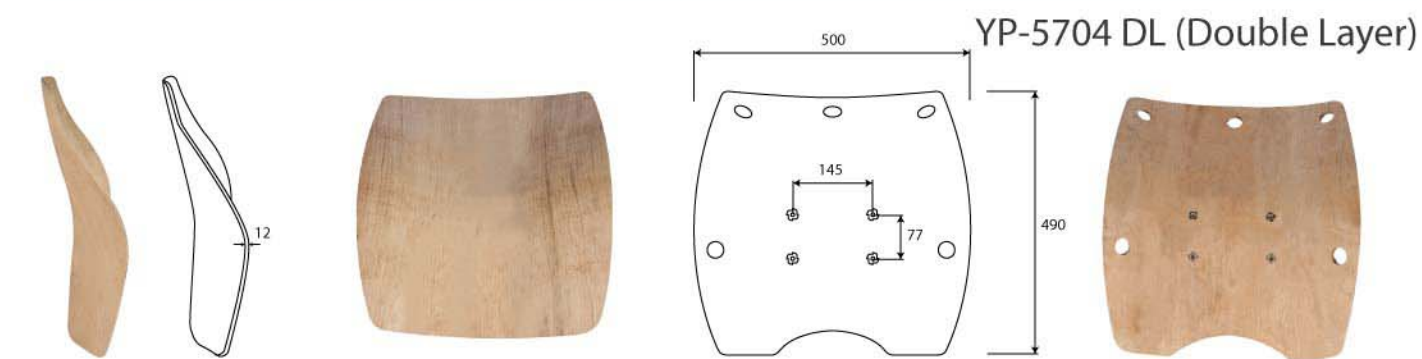
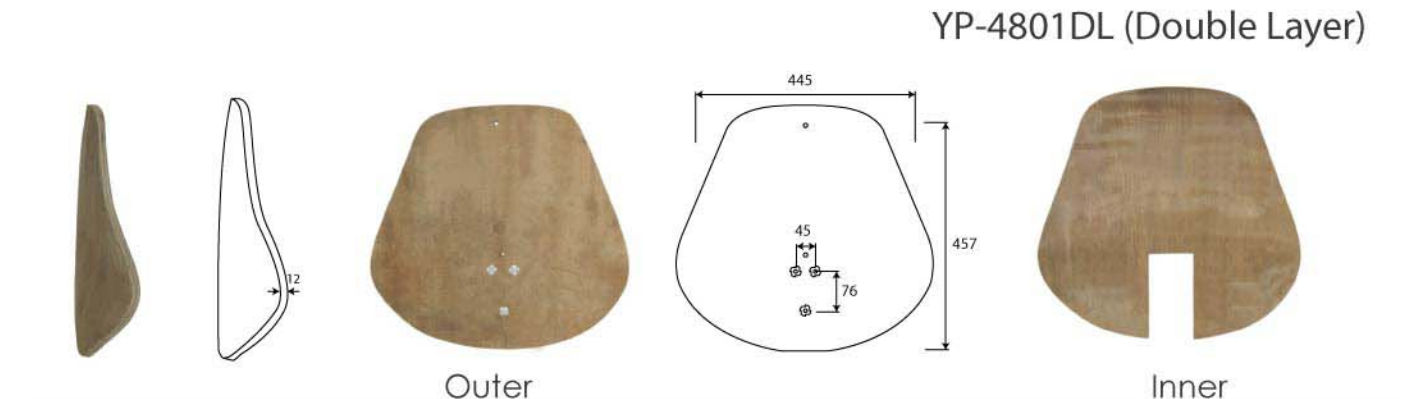
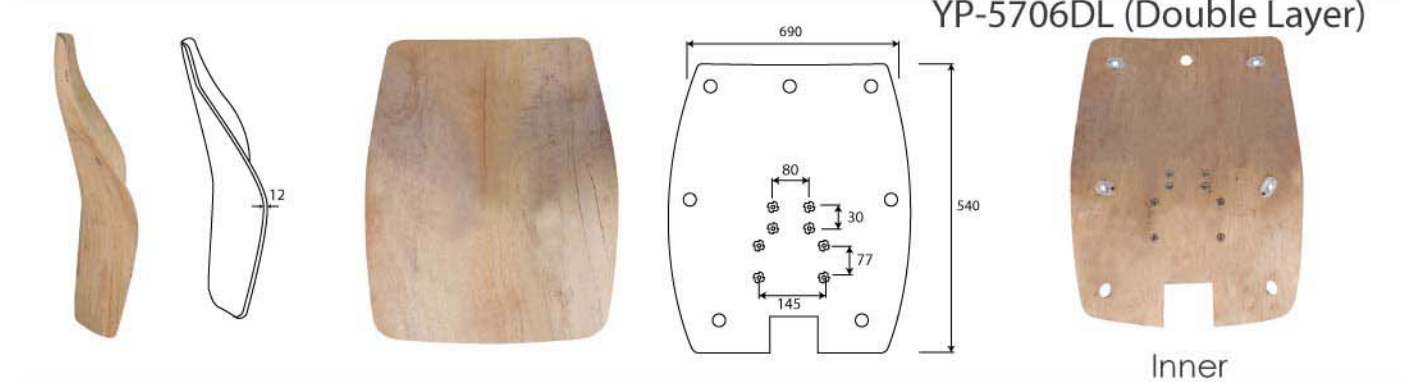
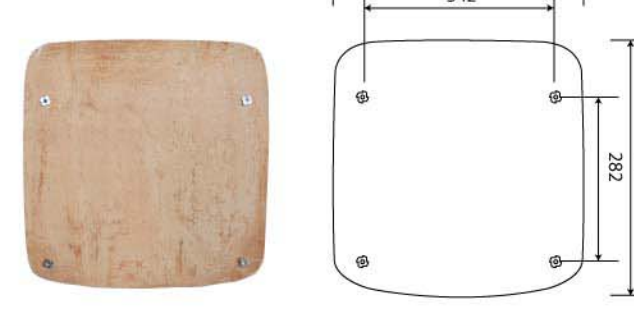
YP-2012



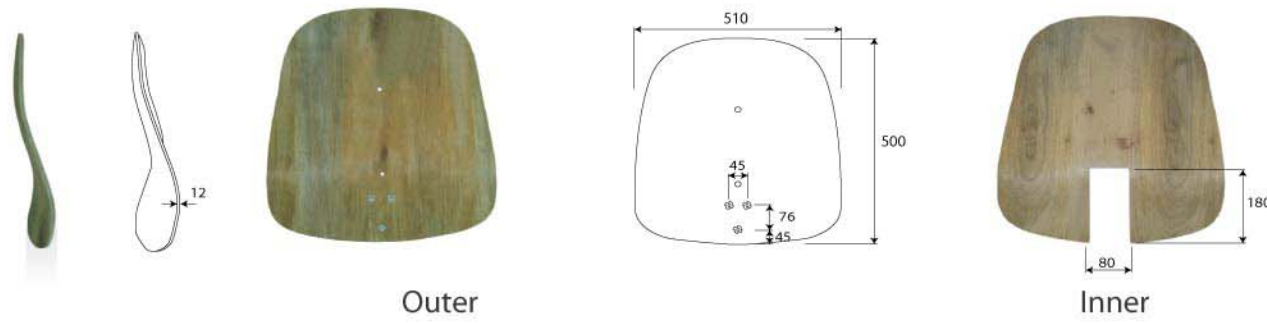
YP-2040



YP-2410



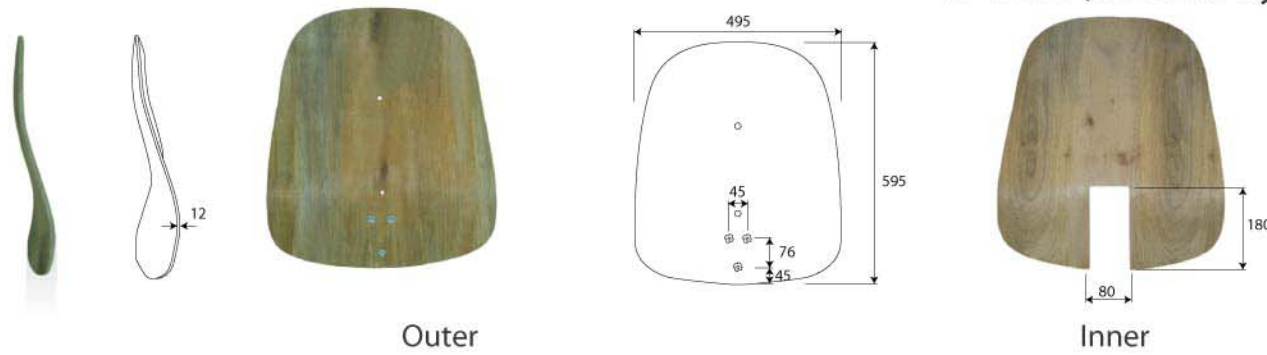
YP-5251 (Double Layer)



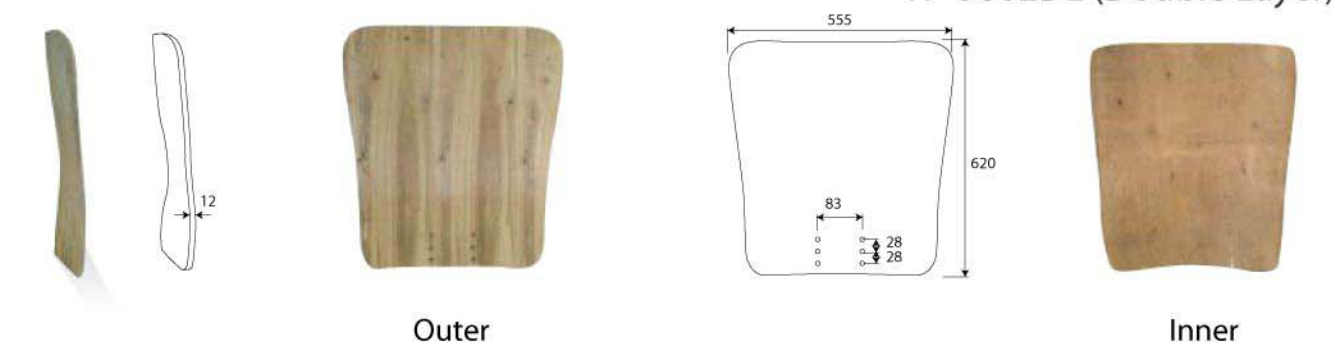
YP-5801DL (Double Layer)



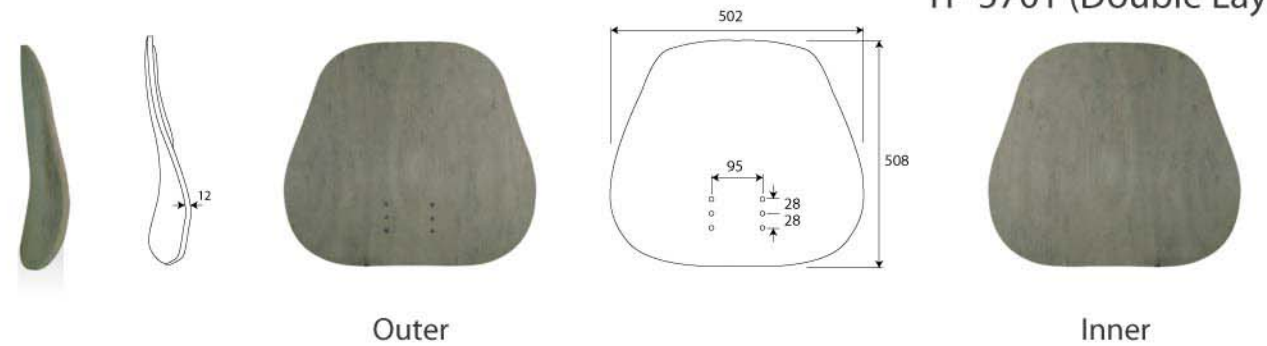
YP-5252 (Double Layer)



YP-5802DL (Double Layer)



YP-5701 (Double Layer)



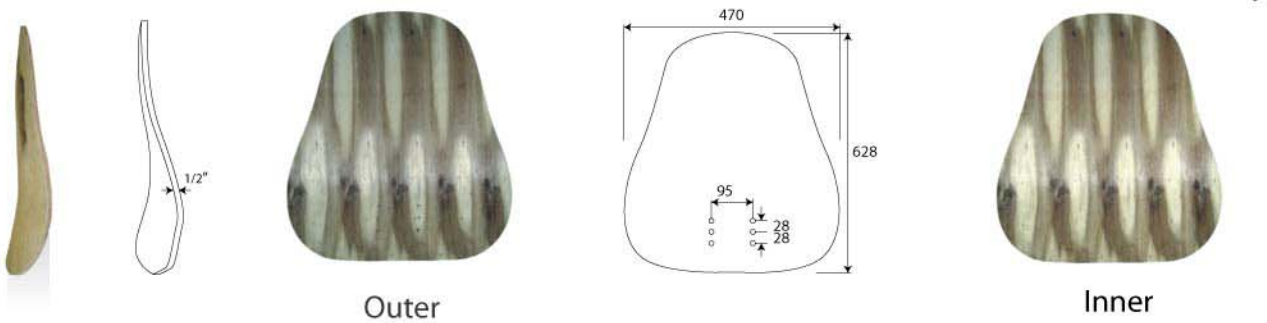
YP-5017 back



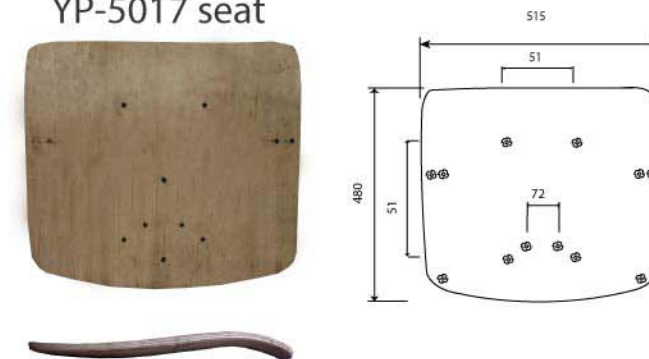
YP-6017 back



YP-5702 (Double Layer)

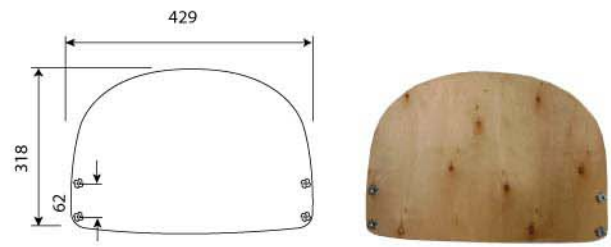


YP-5017 seat

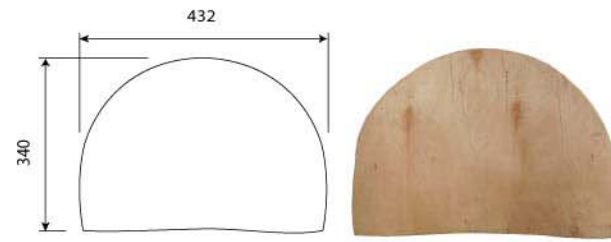


Side view

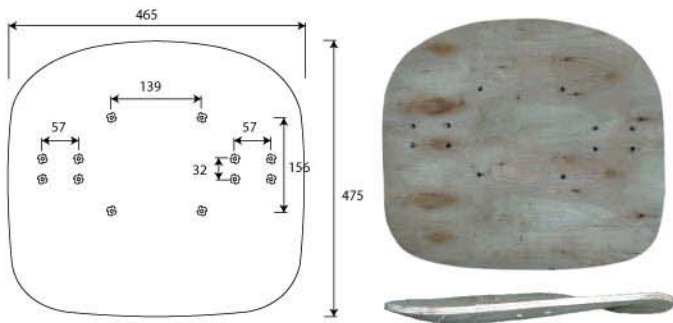
YP 6450 / YP-200 F Medium



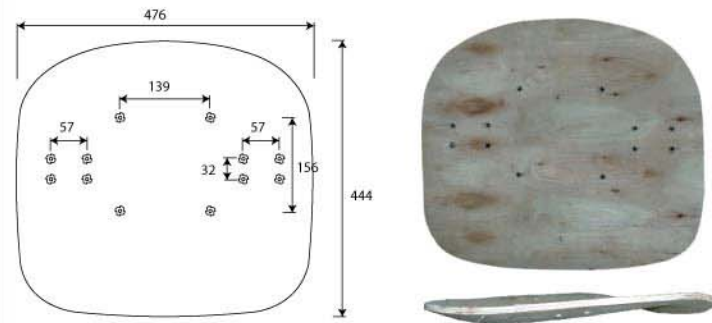
YP 6452 / YP-200 F High



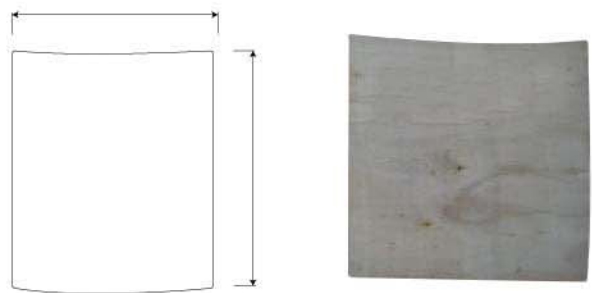
YP-9000



YP-9020



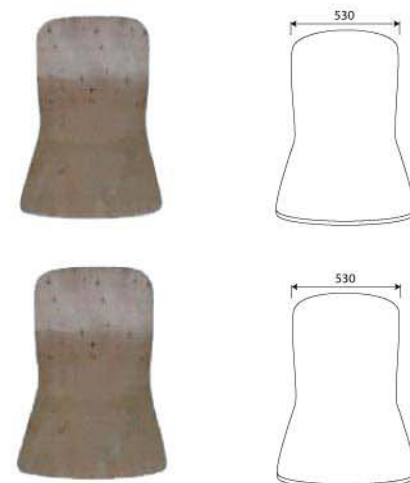
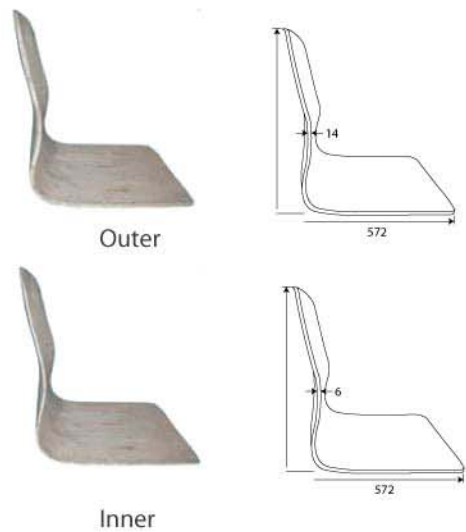
YP-9100 (Blank)



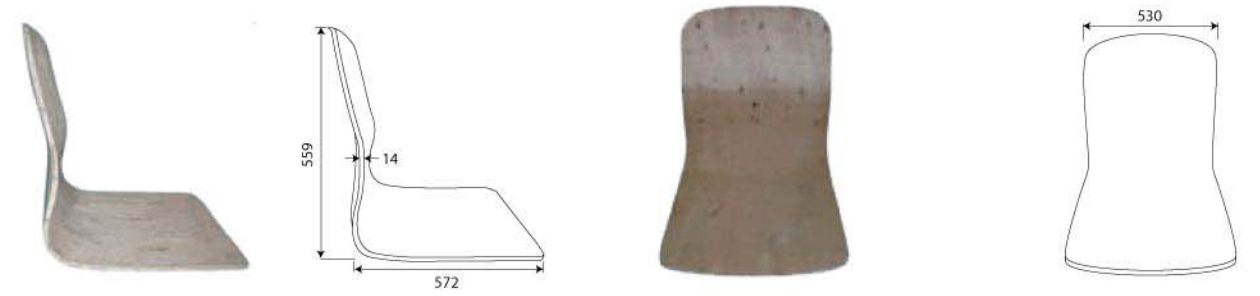
YP-9200 (Blank)



YP-8405(Double layer)



YP-8201(Double Layer)

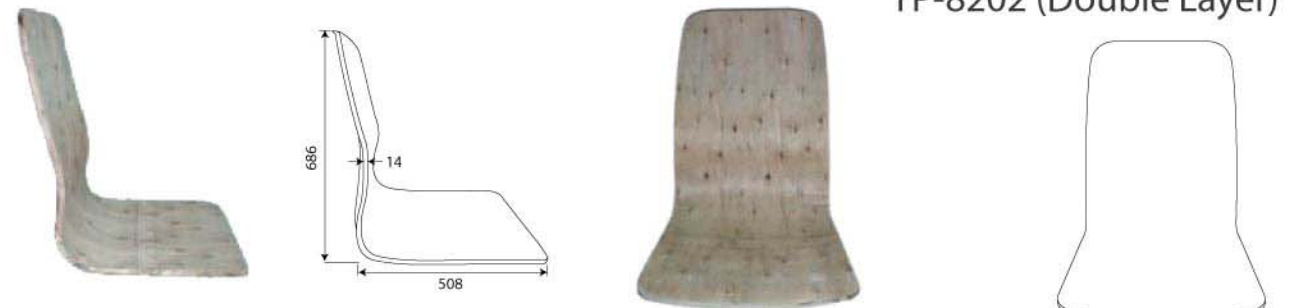


Outer



Inner

YP-8202 (Double Layer)



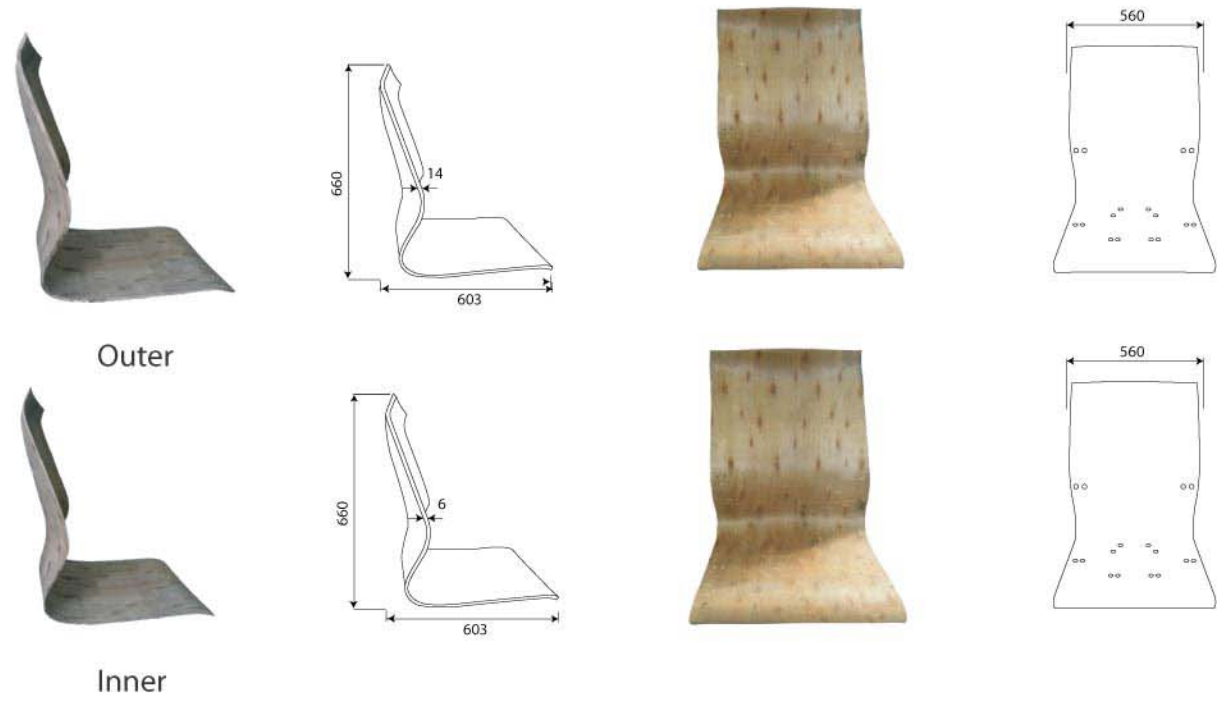
Outer



Inner

INDUSTRIAL SEATING

YP-8402 (Double Layer)



YS-9004 (BACK)
YS-9504 (SEAT)



YS-9005 (BACK)
YS-9505 (SEAT)



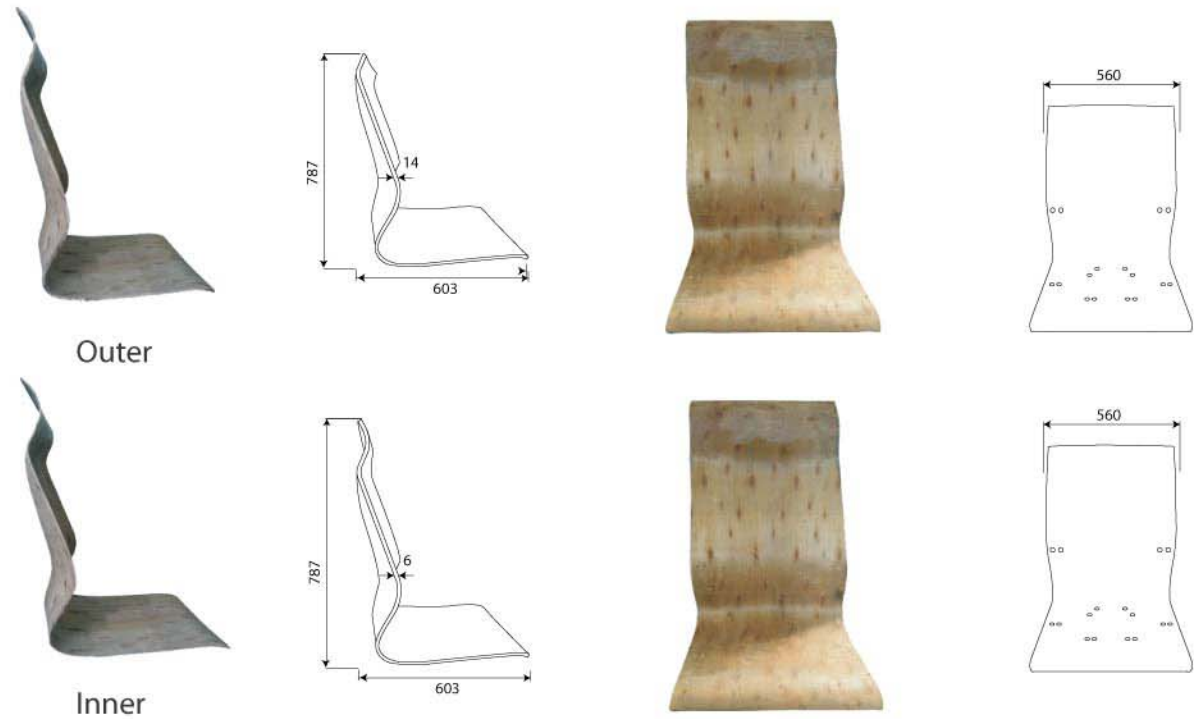
YS-9006 (BACK)
YS-9506 (SEAT)



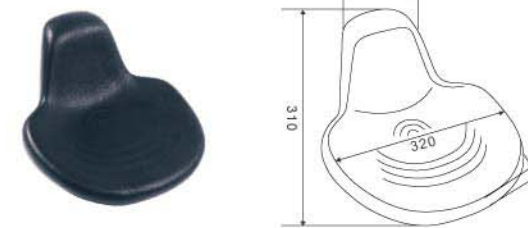
YS-9007 (BACK)
YS-9507 (SEAT)



YP-8403 (Double Layer)



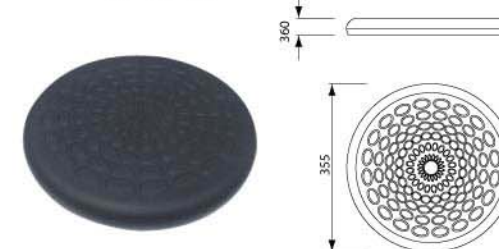
YS-9501



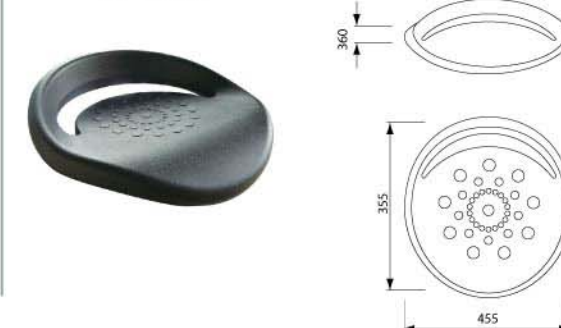
YS-9508



YS-9512



YS-9530



■ INDUSTRIAL KIT

YO 8304



PU Back = YS 9004
 PU Seat = YS 9504
 Bracket = YU 3200+3150
 Bur = YU 1217
 Cover Bellow = YE 5066
 Mechanism = YM 1870
 Gaslift = YG 3295
 Footbase = YB 7133
 Glides = YC 4101

YO 8305



PU Back = YS 9005
 PU Seat = YS 9505
 Bracket = YU 3200+3150
 Bur = YU 1217
 Mechanism = YM 1870
 Gaslift = YG 3385
 Footbase = YB 7132
 Glides = YC 4101

YO 8306



PU Back = YS 9006
 PU Seat = YS 9506
 Bracket = YU 3200+3150
 Bur = YU 1217
 Mechanism = YM 1870
 Gaslift = YG 3385
 Footbase = YB 7102
 Glides = YC 4101

YO 8315



PU Seat = YS 9501
 Mechanism = YM 1215
 Gaslift = YG 3385
 Footring = YB 9300
 Footbase = YB 6432
 Castor = YC 6381

YO 8308



PU Seat = YS 9508
 Mechanism = YM 1315
 Gaslift = YG 3385
 Footring = YB 9300
 Footbase = YB 6432
 Castor = YC 6381

YO 8330



PU Seat = YS 9530
 Mechanism = YM 1215
 Gaslift = YG 3385
 Footring = YB 9300
 Footbase = YB 6432
 Castor = YC 6381

■ DENTAL KIT

Dentist Kit-1



Back = YS 3001 & YS 3100
 Seat = YS 7096
 Plywood = YP 1373
 Bur = YU 4228
 Mechanism = YM 2553
 Gaslift = YG 3235
 Footbase = YB 2532
 Castor = YC 7001

Dentist Kit-2



Back = YA 8710
 Seat = YP 1014/1015/1017
 Bur = YA 8700
 Mechanism = YM 1240
 Gaslift = YG 3235
 Footring = YB 9300
 Footbase = YB 2532
 Castor = YC 7001

Orchid Medium Outer YS-3001
 Inner YS-3100



YP 1373



YG 3235



YM 2553



YB 2532(25")



YC 7001



YA 8700



YA 8710



YA 8720



YP 1014



YB 9300



YP 1050



■ SALON CHAIR



YG 1084



YU 6050



YB 1086



YA 6150



YA 6155



YB 1015



YM 1500 (For Salon Chair only)

